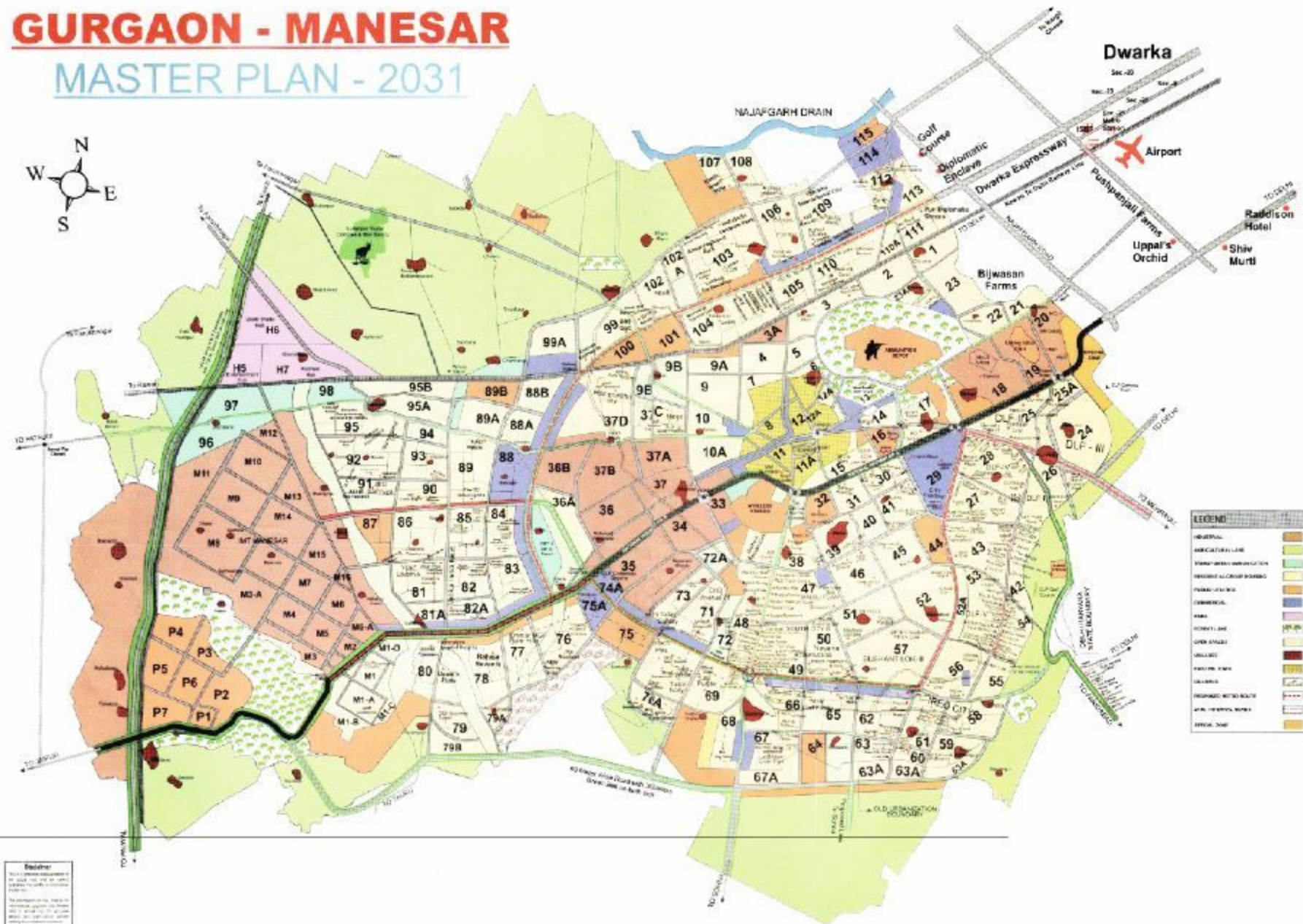




GURGAON - MANESAR

MASTER PLAN - 2031



Disclaimer:
This is a preliminary master plan and is not a final master plan. It is subject to change and is not a guarantee of any specific development or project. The plan is for reference only and is not to be used for any other purpose without the prior written consent of the Planning Commission.



LEGEND

1. ENTRY/EXIT
2. DRIVEWAY
3. ROUND ABOUT
4. GARDEN ENTRY
5. PLAZA
6. SEATING AREA
7. SENIOR CITIZEN'S CORNER
8. CENTRAL LAWN
9. YOGA/MEDITATION PAVILLIONS
10. READING CORNER
11. KID'S PLAY AREA
12. HALF BASKETBALL COURT
13. SAND PIT
14. TREE HOUSE
15. TRAMPOLINE
16. ELEVATED BOARD WALK
17. STEPPED SEATING
18. CRICKET PITCH
19. SKATING RINK
20. ROCK GARDEN & MEDITATION AREA
21. DENSE PLANTING
22. RAISED MOUNDS
23. PATHWAYS
24. JOGGING TRACK
25. OUTDOOR GYM
26. CABANA GARDEN
27. ADVENTURE PLAY
28. ENTRANCE WATER FEATURE
29. SWIMMING POOL
30. KID'S POOL
31. POOL DECK





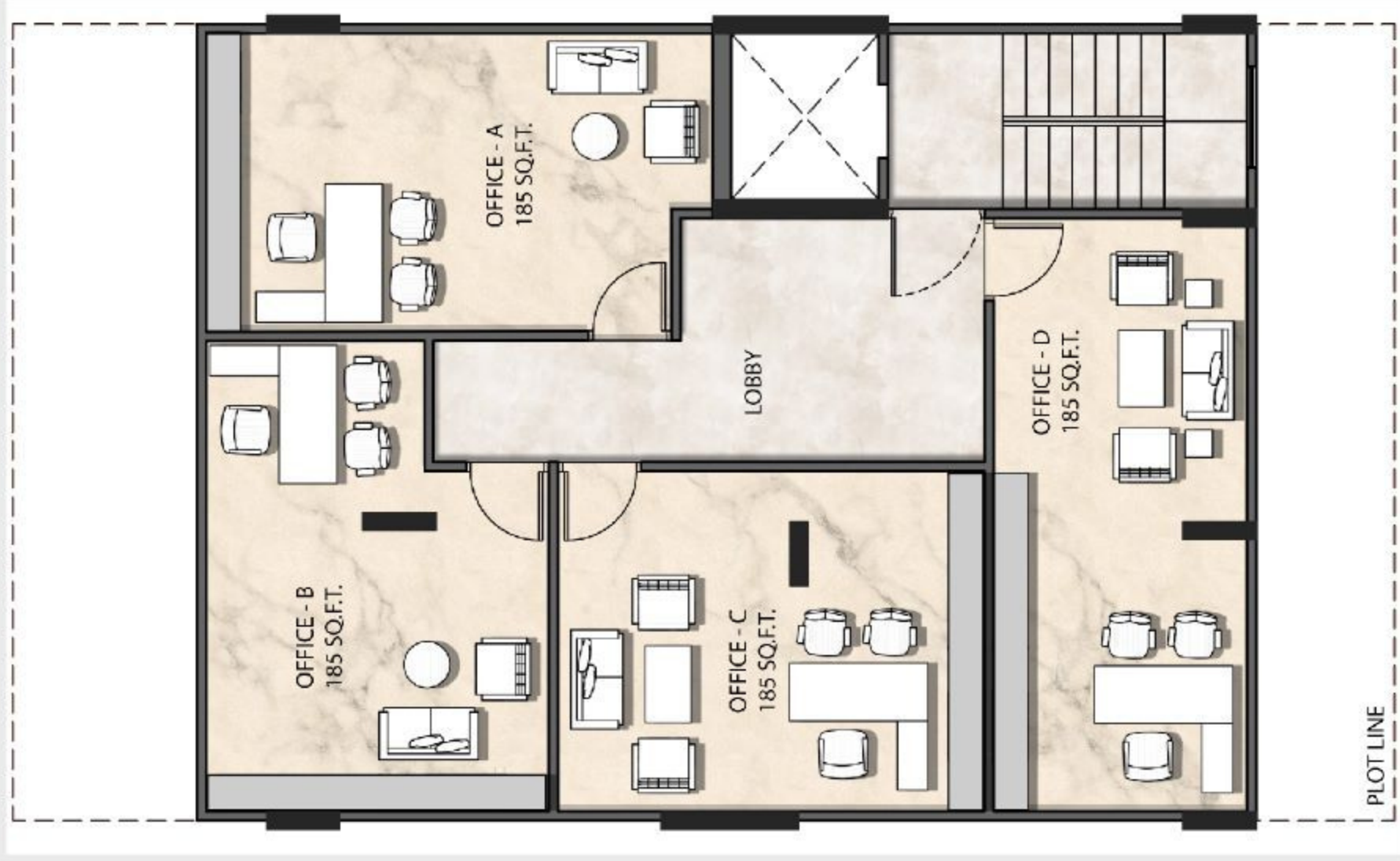




SUPER AREA - 1359 SQ.FT.



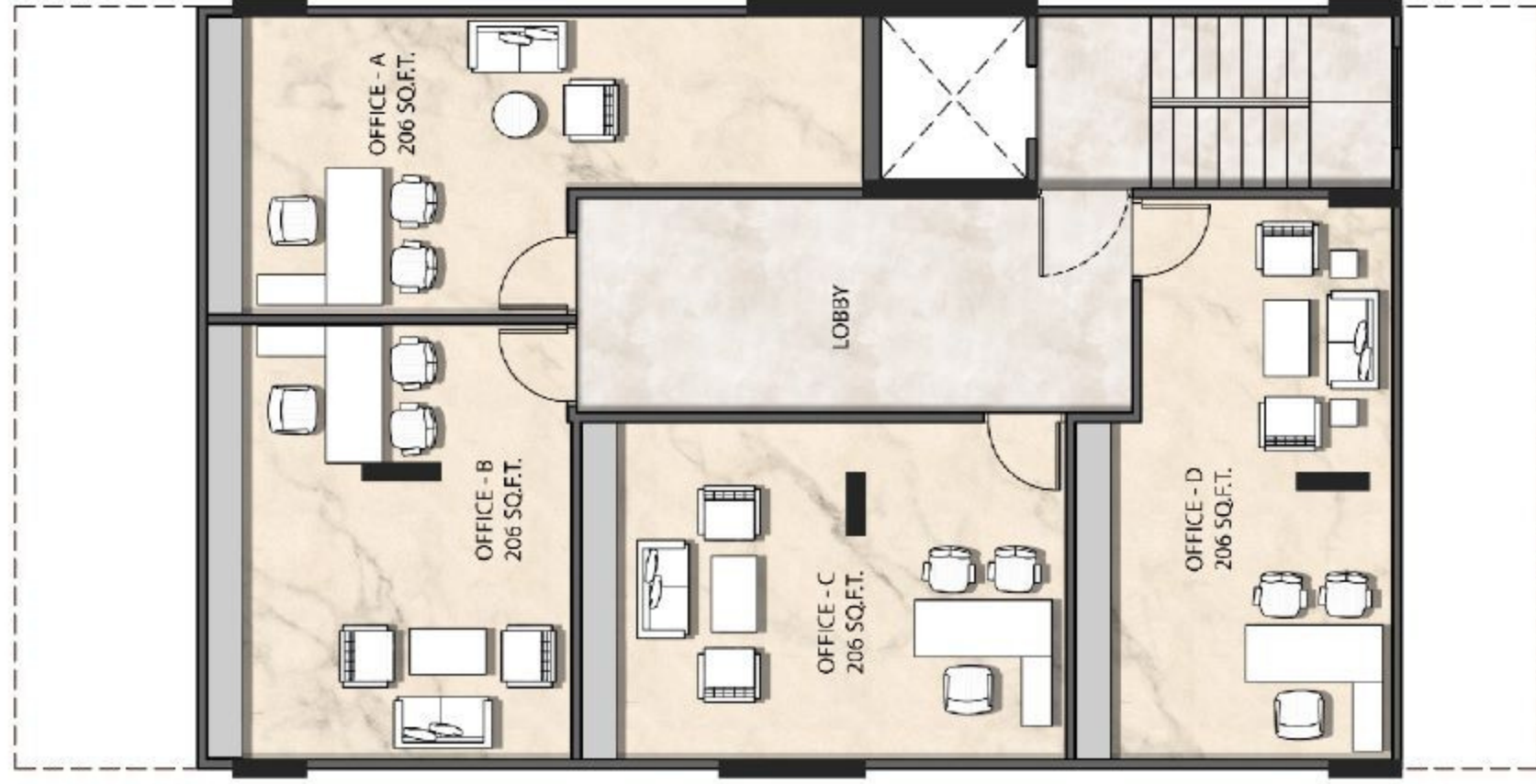
TYPICAL FLOOR PLAN



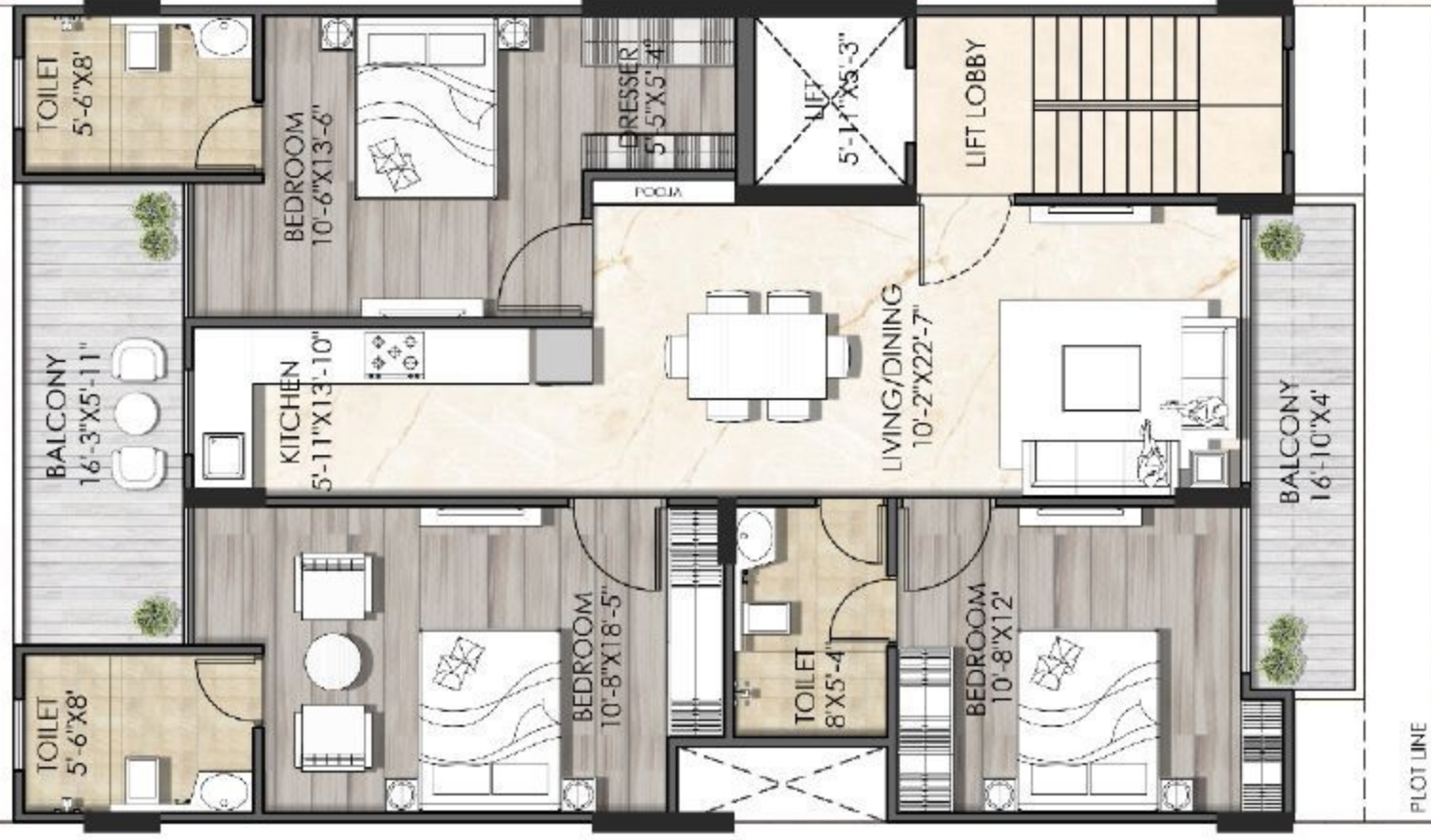
SUPER AREA - 1503 SQ.FT.



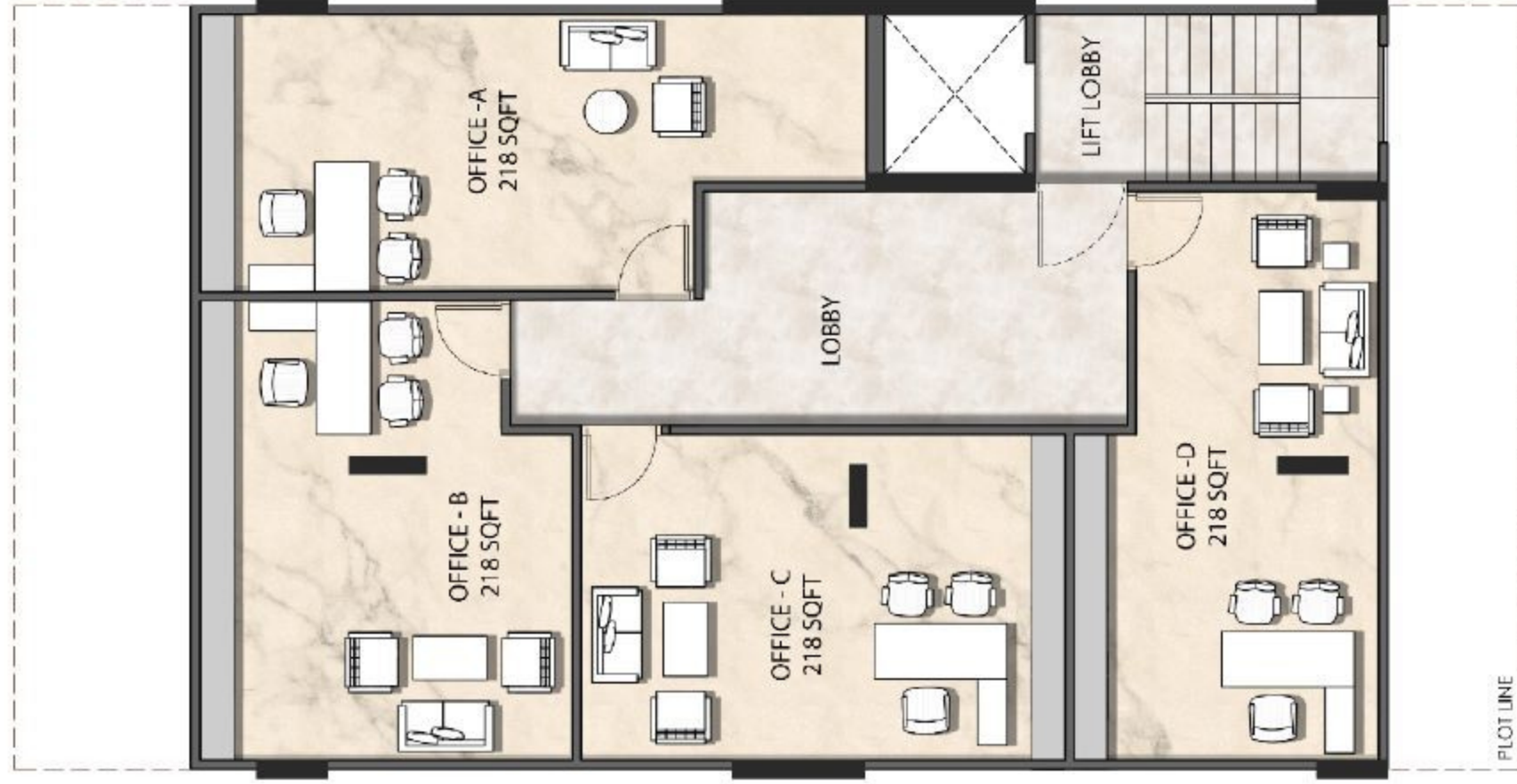
TYPICAL FLOOR PLAN



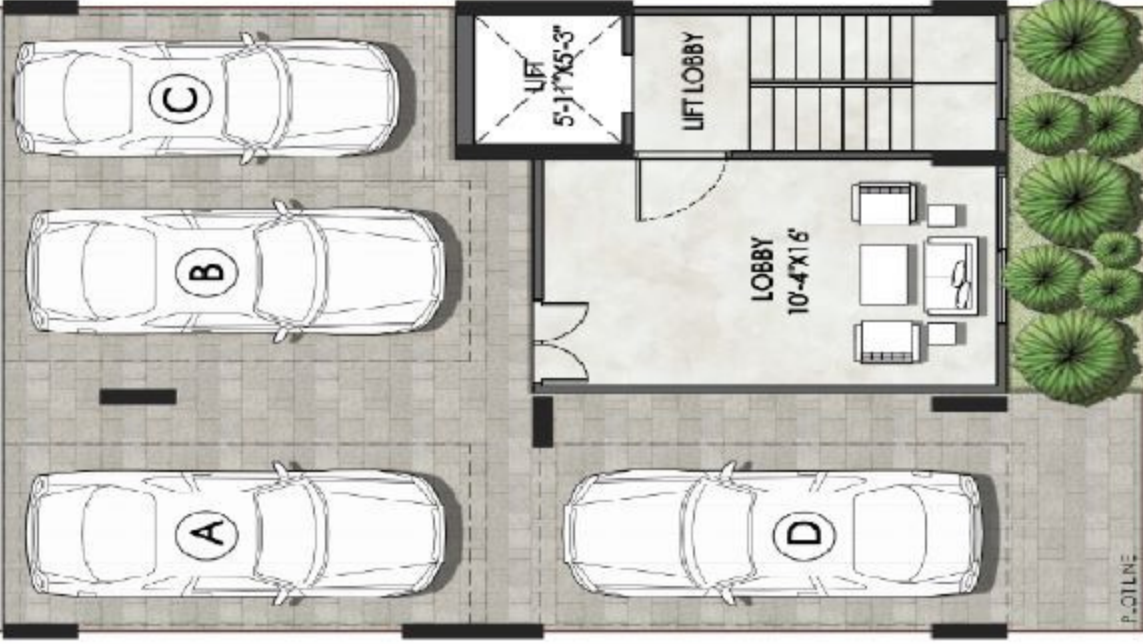
SUPER AREA - 1593 SQ.FT.



TYPICAL FLOOR PLAN



—5.5 M DRIVEWAY—



STILT FLOOR PLAN





BOOK NOW! + 91 80 10 54 54 54



facebook.com/GrowmaxWealth



instagram.com/growmaxwealth/



linkedin.com/company/growmaxwealth



[youtube.com/account- Growmax Wealth](https://youtube.com/account-GrowmaxWealth)



info@growmaxwealth.com



growmaxwealth.com